

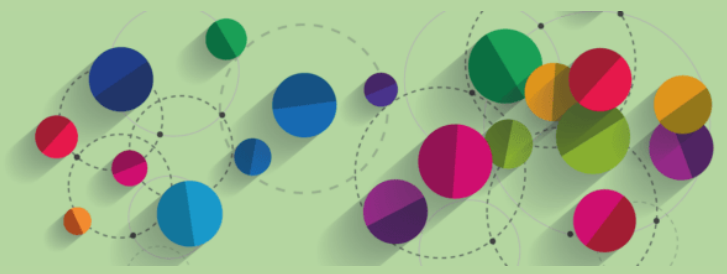
CAMBRIDGE CITY FOODBANK

Food item donations desperately needed now.

Our foodbank relies on your goodwill and support.

Over 90% of the food distributed by foodbanks in [The Trussell Trust](#) network is donated by the public – that's why your food donations are absolutely vital to our ability to give everyone referred to us a balanced and nutritious three day supply of food. Our shopping list on the right shows the food items that we need right now. Donations may be dropped off at:

Tesco Cheddars Ln., Newmarket Rd., CB5 8LD Or Sainsbury's, Brooks Road, Cambridge, CB1 3HP



OUR CURRENT MOST NEEDED LIST:

BAG FOR LIFE (OR SIMILAR STRONG CARRIER BAGS) - DESPERATELY NEEDED!

TINNED TOMATOES

HAND SOAP

TOILET ROLL

NOODLES

INSTANT COFFEE AND TEA BAGS

OLIVE OIL 500ML

KETCHUP, STOCK CUBES

PUDDINGS - ANGEL DELIGHT, JELLY, SPONGE PUDDINGS

PASTA SAUCE

JAM

RICE

LAUNDRY POWDER

NAPPIES SIZE 6