



CAN YOU STILL TRAVEL WITHIN THE UK?

Advice on where you can and can't travel to under current government tiered restrictions

I live in a Tier 1 area and my grandma lives in Tier 3 - can I still go and visit her?

The government advises that you should avoid travelling to any region subject to Tier 3 restrictions.

I live in a Tier 1 area - can I still commute into Tier 3?

Yes, you can continue to travel into "very high" alert level areas for work purposes.

However, the government says you should "aim to reduce the number of journeys you make" and aim to avoid busy times and routes on public transport.

Can I commute to London (Tier 2) for university?

You can commute to a Tier 2 area for university. When in Tier 2, however, you should not meet people in their home or student halls if they're not in your household/support bubble.

Can I stay in a hotel within Cambridgeshire?

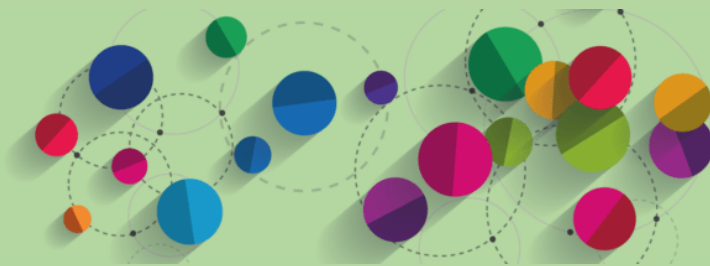
You can stay in a hotel with anyone, but the 'rule of six' applies.

I live in England but I have a holiday booked in Wales. Can I still go?

Wales has announced that it will enter a [second lockdown for two weeks](#) from 6pm on Friday, October 23. This means it is not permitted to travel to Wales for a holiday during this time.

Can I travel into or out of Northern Ireland?

[Tighter restrictions in Northern Ireland](#) came into force on 16 October as part of a four-week 'circuit breaker' lockdown. The



government announced advice against any "unnecessary" travel. It has not detailed what constitutes necessary or unnecessary travel.

Can I travel into or out of Scotland?

The First Minister has advised Scots against travelling to high-risk areas of England. She also asked residents to avoid unnecessary travel in general, and if they must travel, to do so safely.