



WALKING IN CAMBRIDGE

62.9% are not 'generally happy' with their experience as a pedestrian in Cambridge

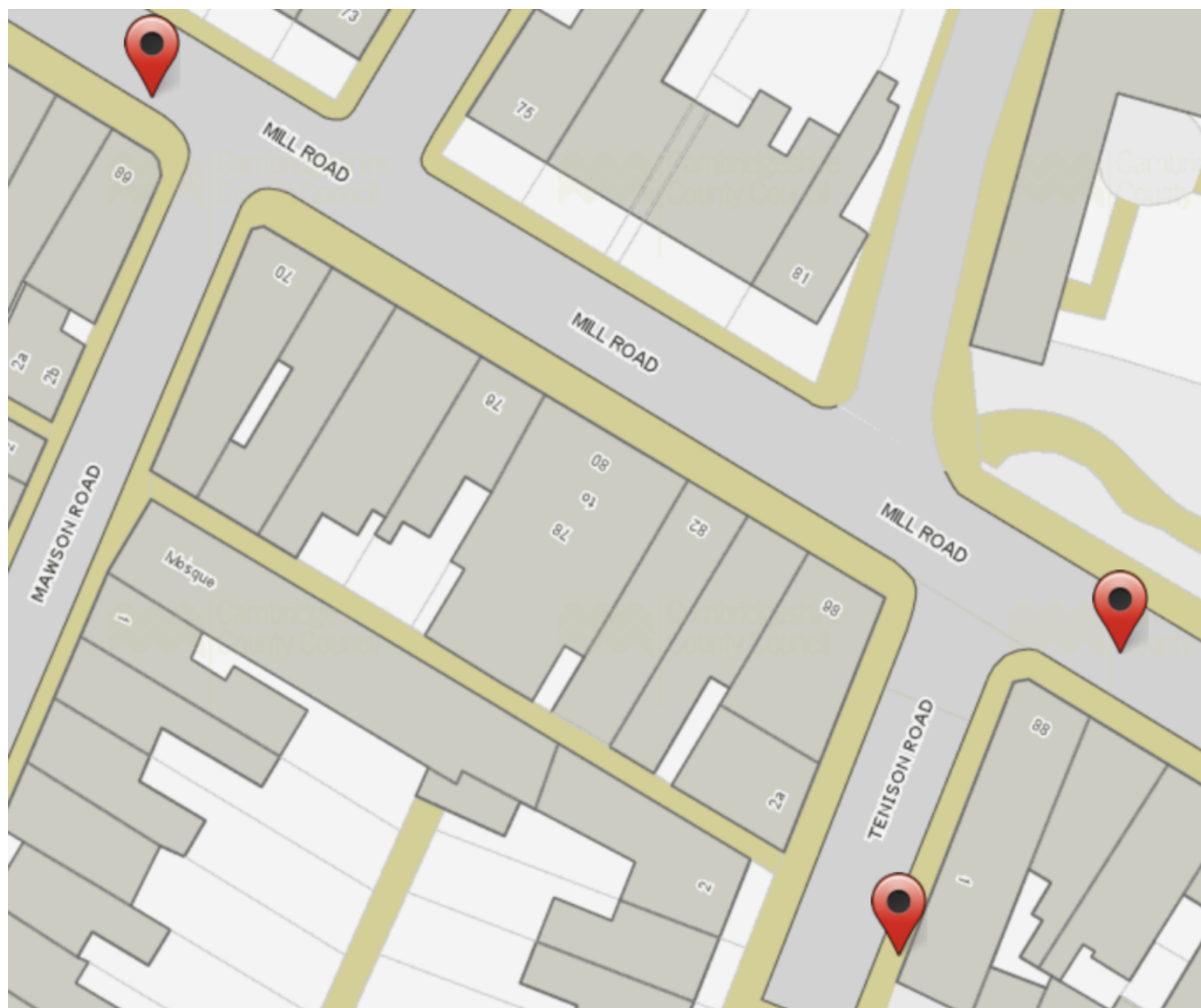
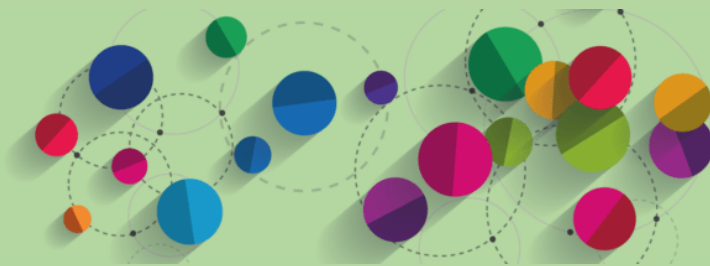
During the pandemic lockdown more of us have accessed shops, leisure facilities and work places on foot. A survey carried out by the local branch of a national organisation, Living Streets has highlighted how dissatisfied the local population is with the state of our streets and pavements.

The report, written by former Petersfield County Councillor Linda Jones reveals that 30 percent of people walk to work, and 73 percent also go shopping on foot. In addition, 93 per cent walk as a form of recreation, and 74 per cent walk to local amenities or to go to a social occasion.

The report states 'We live in an era where active travel is being promoted, and walking is a very important part of that, so we looked at factors including pavement quality, the volume of traffic and air quality and only 6 percent of respondents say they're happy with things as they are.'

The results show:

- 62.9% are not 'generally happy' with their experience as a pedestrian in Cambridge; 5.4% are happy
- 90.7% are concerned that pavements are 'sloping, uneven, cracked or potholed'
- 71.5% complain that pavements are blocked by parked vehicles
- 62.6% complain that pavements are blocked by waste bins
- 41.5% object to traffic signs and street furniture obstructing pavements
- 53% say hedges protrude onto pavements.



The body responsible for pavements and highways maintenance in Cambridgeshire is Cambridgeshire County Council. To report a highways emergency that poses an **immediate danger to the public**, please call either:

- Cambridgeshire Highways on 0345 045 5212 (during office hours - 8am to 6pm Monday to Friday and 9am to 1pm on Saturdays)



- Police on 101

For all non-emergency repairs go to [Cambridge County Council - ReportIt](#). The map will permit you to report the exact location of the fault and will allow you to see those faults that have already been reported.